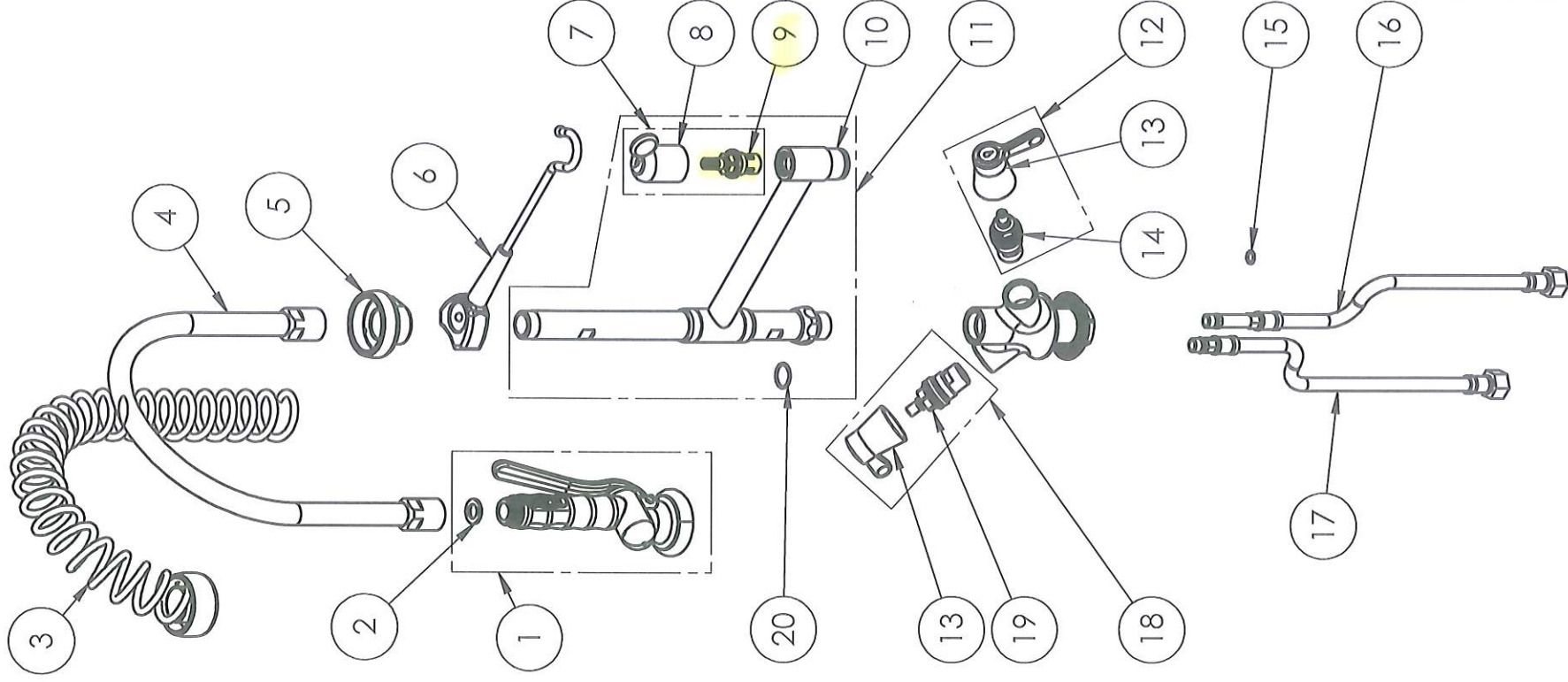


ITEM NO.	SALES NO.	DESCRIPTION
1	P516/"color"	SPRAY VALVE "HOME" (specify the color)
2	P074	FLAT GASKET 1/2" Ø18,5x11 sp.2mm
3	P622/black	OVERHEAD SPRING KL60-70 BLACK
4	F153	Flexinox 60cm Ø14 (Øint.8) F1/2" F1/2"
5	P090	SPRING SUPPORT
6	P599/"color"	SPRAY VALVE HOOK (specify the color)
7	V0DT/R KLD 1532	COMPLETE HANDLE W.RED CODED INDEX + CERAMIC HEADWORK KIT
8	HTC/R	"TOP" HANDLE W.RED CODED INDEX
9	V0D0	3/8" CERAMIC HEADWORK (RH)
10	P015	STREAM REGULATOR OUTLET (Ø20 SPOUT)
11	P658/D1/DT	KL50 RISER W.ADD ON TAP L.170 AND O-RING
12	VK49/B	COMPLETE HANDLE W.BLUE CODED INDEX +CERAMIC HEADWORK KIT
13	HK9E/"color"	HANDLE VOX "STYL" (specify the color Blue or Red)
14	V040/S	1/2" CERAMIC HEADWORK (LH)
15	P283	O-RING 7 x 1.5 mm NBR 70sh.
16	F098	L.35cm Flex S.S. Hose Ø10- Female G3/8"
17	F129	L.35cm Flex S.S. Hose Ø10- Female G3/8"
18	VK49/R	COMPLETE HANDLE W.RED CODED INDEX +CERAMIC HEADWORK KIT
19	V040/D	1/2" CERAMIC HEADWORK (RH)
20	P076	O-RING 2062 (Ø15.6x1.78), EPDM 70 PEROX



TITLE / DESCRIZIONE

Single hole, deck-mount, mixing temperature faucet Pre-Rinse Unit with riser add-on faucet with 170mm swivel nozzle (Ø20mm). G3/8" female inlets, G1/2" 1/4" turn ceramic headworks, riser tube – stainless steel, brass, chrome plated, 14L/min KLARCO "BEST HOME"

DRN / DIS

SCALE /
SCALA 1:5
NUMBER / CODICE DIS.

CHD / VER

DATE /
DATA 02/03/2021
SHEET /
PAG 2 of 2

APPR

This drawing contains proprietary information which is the property of KLARCO S.R.L. without whose written permission it may not be copied, shown or handed to a third party or otherwise used.

MODEL / PRODOTTO
3B.2456.BH.KC9

